

AGEING
WELL

Kia eke kairangi ki te
talkaumatanga

Affordability, Health and Renting for Older New Zealanders

Dr Kay Saville-Smith (CRESA) and Dr Bev James (PP&R)

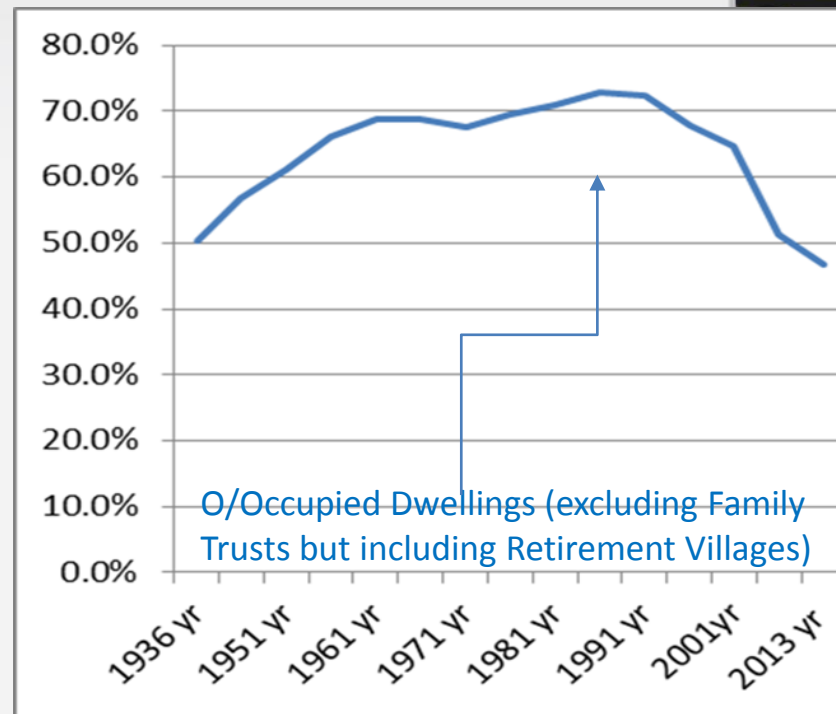
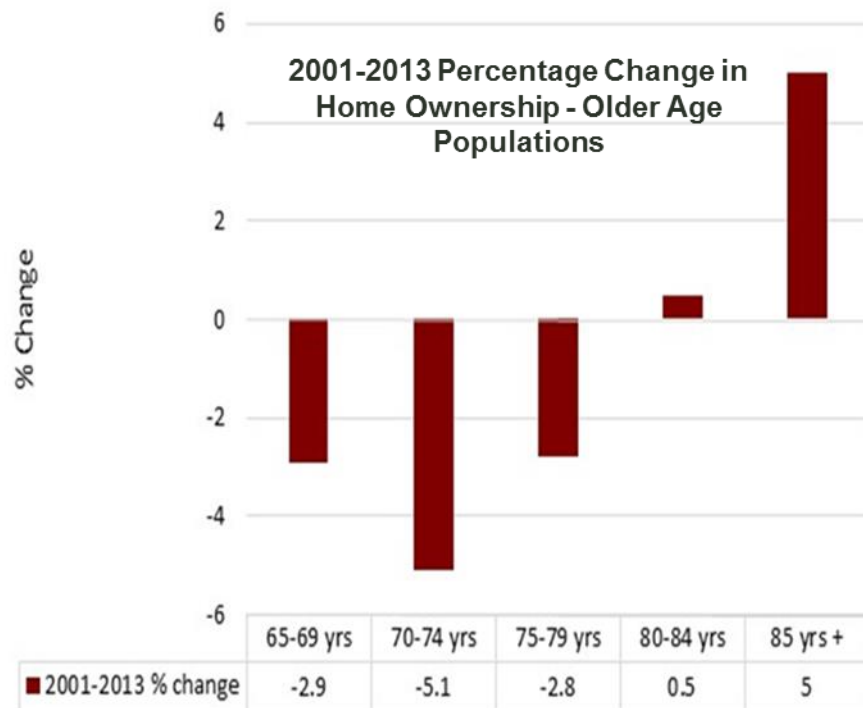
**Australasian Housing Researchers Conference
RMIT
Melbourne 2017**

AGEING
WELL

Kia eke kairangi ki te
talkaumātuatanga

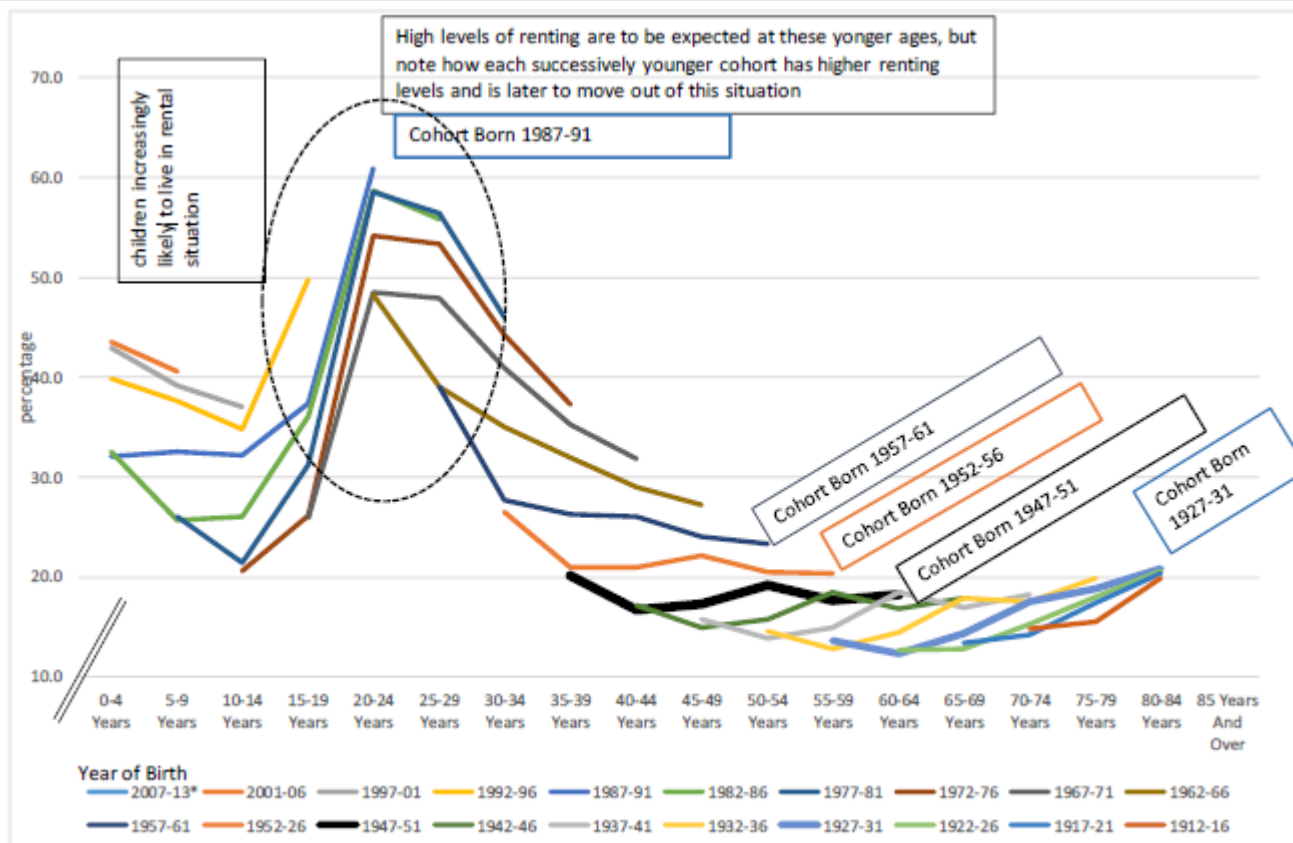
New Zealand is experiencing a tenure revolution

- The older population is least affected, but



AGEING
WELL

Kia eke kairangi ki te
takaumātutanga



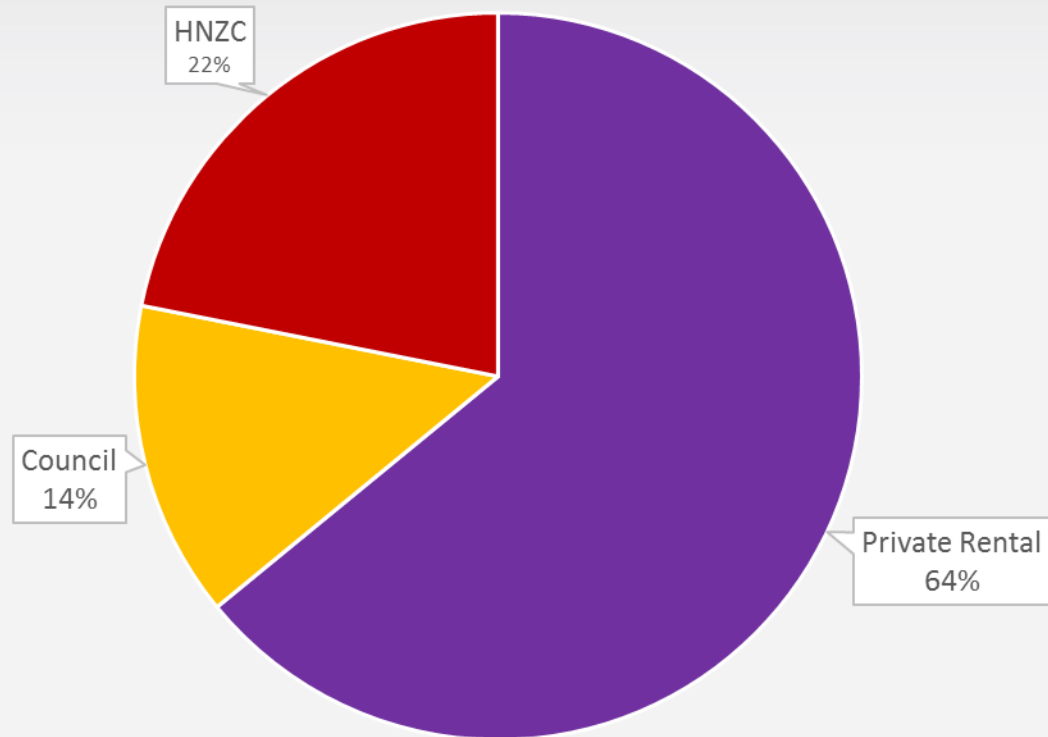
*From 2006 (inclusive), those living in a Family Trust home have been added to those living in a home they own. ** advance each final observation/age group by 5 years

AGEING
WELL

Kia eke kairangi ki te
talkaumatanga

Landlords and Older Renters 2013 Census

The Private Rental Market
is the Major Provider of
Rental Accommodation to
Older People

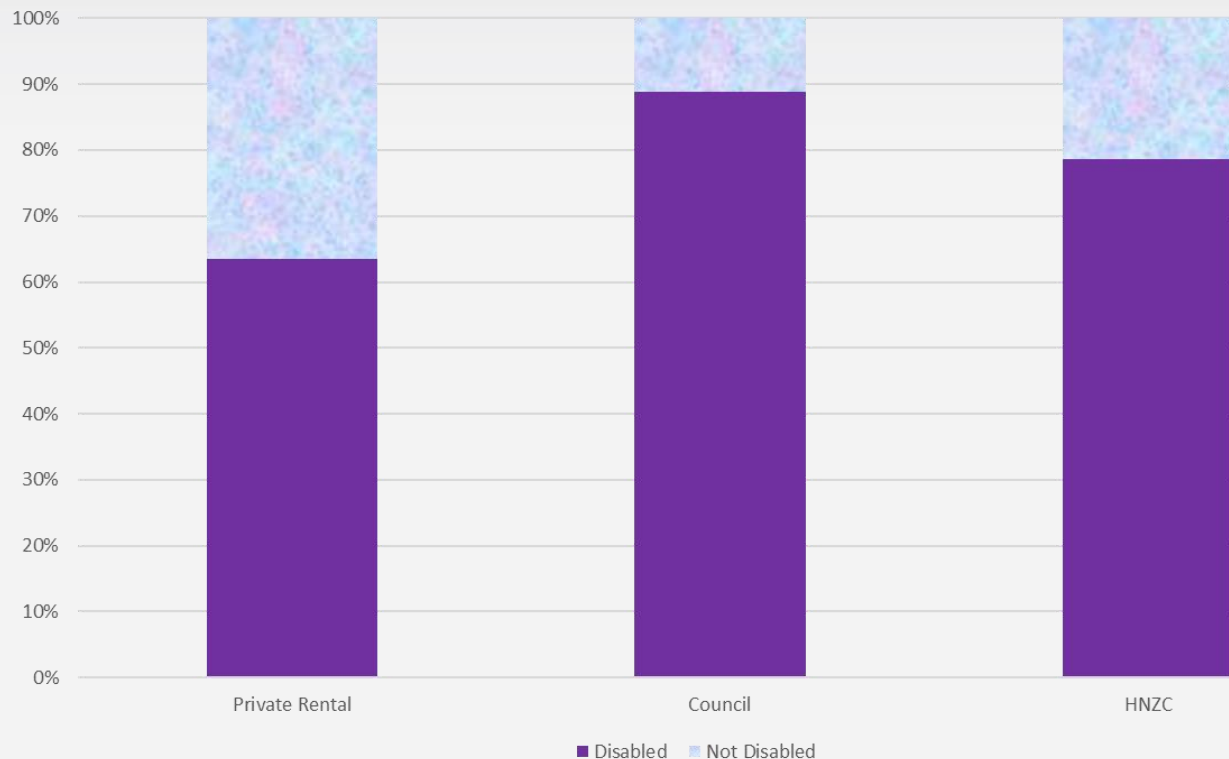


AGEING
WELL

Kia eke kairangi ki te
talkaumatanga

Significant
proportions of
older tenants
report disability

Older Tenants by Disability Status 2013 Census and Health Survey



AGEING
WELL

Kia eke kairangi ki te
talkaumatanga

Pathways to Older Renting

- Some will be renters of the past
- Some are downsizers from owner occupation
 - ‘Shock survivors’
 - Equity release
 - Managerial release
- Equity and Managerial Releasers:
 - Some attractive to Retirement Villages (RVs) – for **LTOs** and as **Renters**
 - But not all older people are attractive RVs
 - RVs are not attractive to all older people

AGEING
WELL

Kia eke kairangi ki te
takaumātutanga

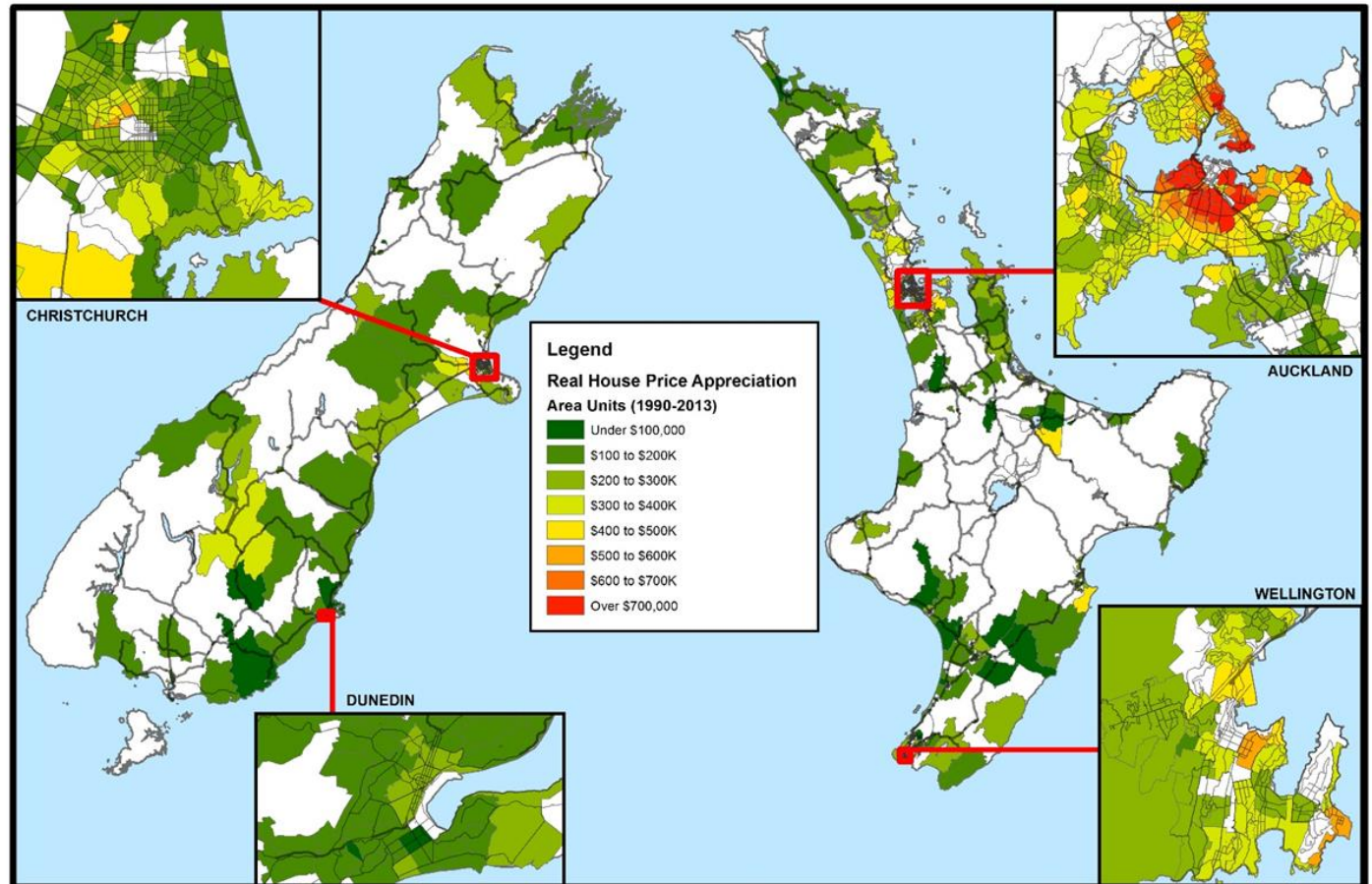
Challenges/Opportunities for the Rental Market

- NZ landlords including the community sector have yet to recognize older tenants as a market segment
- Market conditions are not that easy
 - Margins are tight with high house prices
 - Reliance on capital gain can not be sustained in many housing markets
 - Rent elasticities are limited – typically older tenants are and will lower income
- Strong reliance on the existing housing stock with associated issues of:
 - Connectivity
 - Accessibility
 - Size
 - Thermal performance

Real House Price Appreciation 1990-2013

AGEING
WELL

Kia eke kairangi ki te
talkaumatanga



AGEING
WELL

Kia eke kairangi ki te
talkaumatanga

It's Going to Get Pretty Complex for Landlords

- Adapting tenancy management
- Developing fit for purpose stock
 - Accessible housing
 - Multi-generational/multi-family housing
 - Location, location
 - High performance stock
 - Realising downsizer potential
- Identifying places that give good returns
 - Low entry pricing
 - Maximising income certainty, reducing maintenance vs unaffordable rents
 - Thinking provincial – ageing NZ, lower house prices
- Developing new networks and synergies

AGEING
WELL

Kia eke kairangi ki te
talkaumatanga

Affordability

- Income support for older people is based on assumptions of mortgage free owner occupation
- Older tenants are Accommodation Supplement (AS) reliant
- AS is calibrated to NOT meet the unaffordable gap
- Older people have limited access to Income Related Rent (IRR) subsidized providers
- Older tenants are persistently exposed to unaffordable rent in:
 - Public housing – council stock is excluded from the IRR
 - Community housing – existing tenants are not eligible for IRR
 - Private rental market – tenants not eligible for IRR

AGEING
WELL

Kia eke kairangi ki te
talkaumatanga

Affordability Case – Western Bay of Plenty

- Tauranga and surrounds – retirement belt
- Rental is largely private
- 45% of all older renters receive AS
- 54% of older renters not in public housing (HNZ) receive AS
- HNZC tenants access IRR
- HNZ has dismantled the tenure security policy and is reviewing older people's tenure in HNZC dwellings – the majority are unlikely to be typified as priority
- At least 54% of older renters are dealing with unaffordable rents
- Affordable rents for superannuitants:
 - \$90/wk – older people living alone
 - \$134/wk – couples

AGEING
WELL

Kia eke kairangi ki te
talkaumatatanga

Market Rent in Tauranga Greerton 1 Apr – 30 Sept 2016

Tauranga Central, Greerton	Lower quartile rent	Median Rent	Upper Quartile Rent
1 room	\$150	\$167	\$180
1 bed apartment	\$270	\$280	\$310
2 bed apartment	\$325	\$340	\$380
1 bed flat	\$221	\$240	\$277
2 bed flat	\$300	\$330	\$348
1 bed house	\$245	\$272	\$290
2 bed house	\$335	\$360	\$380

AGEING
WELL

Kia eke kairangi ki te
talkaumatanga

New alliances, networks and collaborations needed to address ageing in the community

- Community sector including
 - Disability resource centres
 - Age concern
 - CAB
 - Budget services
 - Men's sheds
- In-home care services
- Public agencies
 - ACC
 - Ministry of Health
 - Councils
 - MSD

AGEING
WELL

Kia eke kairangi ki te
talkaumatanga

Ways Forward for NZs Future Older Tenants

- Private sector landlords encouraged to see and deliver on opportunities
- Good landlord accreditation
- Accessible homes – LifeMark
- ‘Right-size’ stock
- Secure tenancies
 - Investing in social housing partnerships
 - Improved margins
 - Development opportunities
 - Integrated site management
 - Integrated tenant management